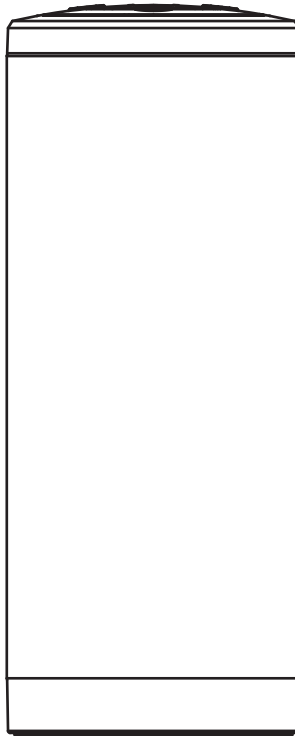




VOICE-ACTIVATED BLUETOOTH SMART SPEAKER WITH
GOOGLE AND SIRI ASSISTANT



MODEL:NAS-5006

Please read this user manual carefully to ensure proper use of this product
and keep this manual for future reference

IMPORTANT SAFETY INSTRUCTIONS



CAUTION: TO REDUCE THE RISK OF ELECTRIC SHOCK, DO NOT REMOVE THE COVER (OR BACK) OF THE DEVICE. NO USER SERVICEABLE PARTS ARE INSIDE. PLEASE REFER SERVICING TO QUALIFIED SERVICE PERSONNEL.



DANGEROUS VOLTAGE:The lighting flash with arrowhead symbol within an equilateral triangle is intended to alert the user to the presence of uninsulated “dangerous voltage” within the product’s enclosure that may be of sufficient magnitude to constitute a risk of electric shock to persons.



ATTENTION:The exclamation point within an equilateral triangle is intended to alert the user to the presence of important operating and maintenance (servicing) instructions in the literature accompanying the appliance.

WARNING:TO PREVENT FIRE OR SHOCK HAZARD, DO NOT EXPOSE THIS UNIT TO RAIN OR MOISTURE.

Warning:

- Batteries (a battery pack or installed batteries) shall not be subject to excessive heat, such as direct sunlight, fire, or the like.
 - * This product is built with an internal rechargeable battery.
- Changes or modifications not expressly approved by the manufacturer could void the user’s authority to operate this device.
- Usage of controls or adjustments of performance procedures, other than those specified herein, may result in hazardous exposure.
- Recharge the battery when the device indicates that the battery is low.
- It is highly recommended to charge the battery immediately when the battery is low.
- To prolong the life of the battery, it is NOT recommended to use the device when it is charging.
- To prolong the life of the battery, consider recharging its battery at least once per month.

FCC STATEMENT:

This device complies with part 15 of the FCC Rules. Operation is subject to the following two conditions:

- (1) This device may not cause harmful interference, and
- (2) This device must accept any interference received, including interference that may cause undesired operation.

FCC NOTICE:

This equipment has been tested and found to comply with the limits for a Class B digital device, pursuant to Part 15 of the FCC Rules. These limits are designed to provide reasonable protection against harmful interference in a residential installation. This equipment generates, uses and can radiate radio frequency energy and, if not installed and used in accordance with the instructions, may cause harmful interference to radio communications. However, there is no guarantee that interference will not occur in a particular installation. If this equipment does cause harmful interference to radio or television reception, which can be determined by turning the equipment off and on, the user is encouraged to try to correct the interference by one or more of the following measures:

- Reorient or relocate the receiving antenna.
- Increase the separation between the equipment and receiver.
- Connect the equipment into an outlet on a circuit different from that to which the receiver is connected.
- Consult the dealer or an experienced radio/TV technician for help.

FCC WARNING:

To assure continued operation, follow the attached installation instructions and use only shield cables when connecting to other devices. Changes or modifications not expressly approved by the party responsible for compliance could void the user's authority to operate the equipment.

Trademark & Regulatory Statements

Bluetooth® is a registered trademark of Bluetooth SIG, Inc. Other trade-marks and names are those of their respective owners.

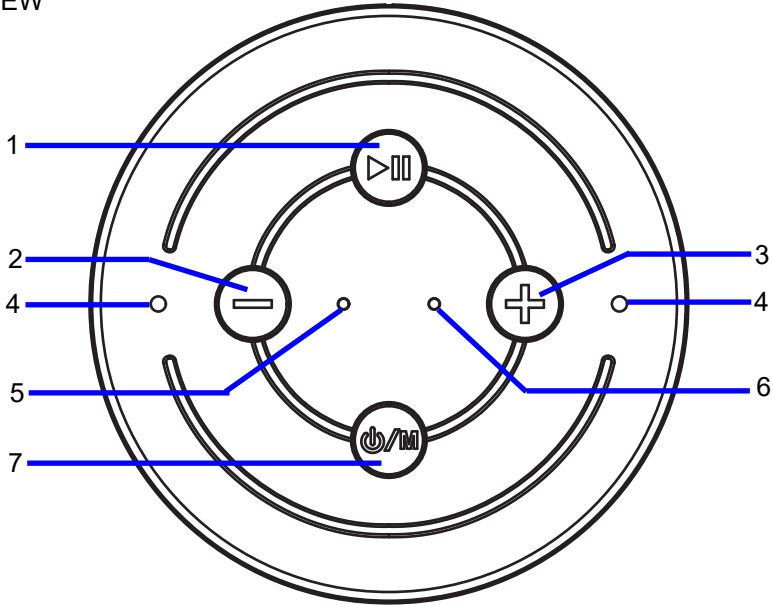
Micro SD is a trademark or registered trademark of SD-3C, LLC in the United States, other countries or both.

Google Play™ store and all Google Brand Features are trademarks or distinctive brand features of Google Inc., LLC.

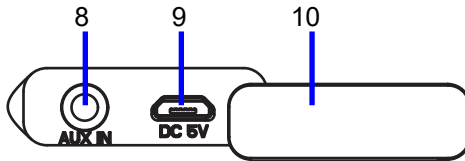
Apple App Store™ and Siri Assistant are registered trademarks of Apple Inc.

PRODUCT OVERVIEW

TOP VIEW



REAR VIEW

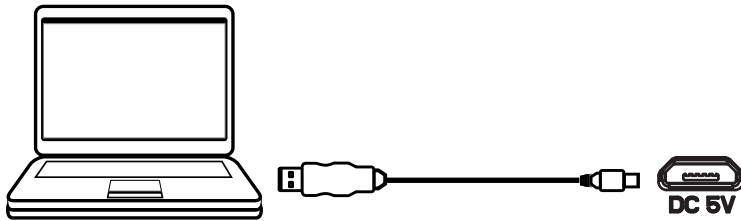


- | | |
|----------------------------------|-------------------------------------|
| 1. Play/Pause, Hands-Free Button | 6. Pairing Indicator |
| 2. Volume Down Button | 7. Power On/Off, Mode Switch Button |
| 3. Volume Up Button | 8. AUX-IN Jack |
| 4. Built-in Microphone | 9. Micro-USB Charging Port |
| 5. Charging Indicator | 10. Rubber Cover |

RECHARGING THE UNIT

The unit has a built-in rechargeable battery, charge it before operation or when it is drained as below:

1. Uncover the rubber cover at the rear of the unit.
2. Insert the Micro USB connector of the included charge cable into the DC 5V input, which serves as the speaker's Micro USB port.
3. Plug the other end of the USB cable into a computer or other compatible device, as shown below.



4. While charging, the indicator light on the unit will turn red, it will turn off when completely charged.

NOTES:

- A. Before first time use, charge approximately 4 hours until the unit is completely charged.
- B. Recharge and store the unit within the temperature range of 5°C~35°C (40°F~95°F).
- C. Do not charge longer than 24 hours. Excessive charging or running the unit until the battery fully drains will damage battery. Battery life will be extended if you keep the battery fully charged.
- D. Battery life naturally shortens slowly over time.
- E. The rechargeable battery built into this product is not user replaceable.

BLUETOOTH OPERATION

1. Press and hold the “ \odot /M” button to turn the device on. After powering on, the mode indicator will begin to blink, alternating between blue and green.
2. Activate the Bluetooth menu on the device you wish to connect to the unit. Begin a device search for the speaker. The pairing name "NAS-5006" will appear on the pairing list. Select it to establish a connection.
3. After a successful connection made, the mode indicator will be solid blue.
4. Play a track on your paired device as you would normally.

While playing:

- Press the “▶||” Button to pause, and press it again to resume playing.
- Press the “-” or “+” button to adjust the volume level.

Hands-Free Function:

- During an incoming call, press the “▶||” button once to answer the call. Press it again to end the call.
- During an incoming call, press and hold the “▶||” button to reject the call.

NOTE:

If the Aux-in cable is inserted into the Aux-in jack, the device will automatically switch to AUX IN mode.

INSTALLING GOOGLE ASSISTANT

1. Access the Google Play Store or Apple App Store from your smartphone device.
2. Install the Google Home app onto your smartphone device.



Google, Android™, Google Play, Google Home, Chromecast Built-in and other marks and logos are trademarks of Google Inc.

3. Establish a wireless connection from the wireless router to your smartphone. If Wi-Fi is not available, you can use data.

6. Activate the Bluetooth functionality on your smartphone device.

* The Google Home app uses Bluetooth to identify the speaker.

7. Open the Google Home app and follow the on-screen instructions to set the initial settings for the speaker.



USING GOOGLE ASSISTANT

Once the speaker is set up as a Google Home device, you can control the operation of the speaker with Google Assistant using just your voice.

1. Begin any Google Assistant voice command by addressing the speaker with “Hey Google” or “Ok Google”.




2. Instruct the speaker to perform an activity using one of the Google Assistant voice commands, and the speaker will initiate immediately.

For a full list of the latest Google Assistant voice commands, please refer to the voice command list found on the following website: assistant.google.com/intl/en_us/.

SETTING UP SIRI ASSISTANT

1. To set up Siri Assistant on your speaker, you need an iPhone, iPod touch, or iPad with iOS 12 or later.
2. To begin, ensure that your iOS device has Bluetooth mode turned.
3. Plug in and turn on the speaker. Then hold your unlocked iOS device within a few centimeters of the speaker, until the setup screen appears. Tap “Set Up” and follow the on-screen instructions.

Note: If the setup screen does not appear automatically, open the Home app on your iOS device, tap the , then tap Add Accessory. Tap “Don’t Have a Code or Can’t Scan?”, then select the speaker in the Nearby Accessories list. If you do not have the Home app already installed, you can download it from the App Store.

4. Listen for “Hey Siri” in the Siri & Search settings menu of your iOS device.

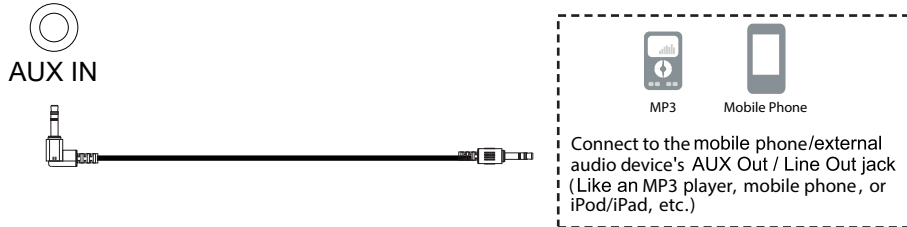
USING SIRI ASSISTANT

Once Siri Assistant has been set up on your speaker, you can fully control the speaker using voice commands, allowing you to open and utilize any function on your phone.

1. When addressing the speaker, be sure to speak clearly in your requests. Into the microphone of the speaker, say “Hey Siri” to activate Siri for your iOS device.
2. Siri Assistant can be used for GPS purposes, to ask about the weather, get the latest traffic updates, check your flight times, play all of your favorite music and playlists, browse through your photos, check your emails, and much more.

AUX IN

1. Uncover the rubber cover at the rear of the unit.
2. Insert one end of the auxiliary cable into the external device's Aux-output jack.
3. Insert the other end of the auxiliary cable into the speaker's Aux-input jack.



4. Press and hold the “ ϕ /M” button to turn the device on.
5. Press the “ ϕ /M” button to switch to AUX IN mode. The mode indicator will turn solid Green.
6. Play music on the external device, as you would normally.

While playing:

Press the “ - ” or “ + ” button to adjust the volume level.

TROUBLESHOOTING GUIDE

Check the following before requesting service:

SYMPTOM	POSSIBLE CAUSE	POSSIBLE SOLUTION
Won't turn on	Built-in battery is dead	Recharge the battery
No sound or weak sound	Volume level of paired/connected device is set to a low level	Raise the volume level of the paired/connected device
Sound distortion	Volume level of the connected/paired device is set too high	Reduce the volume level of the connected/paired device
BT not functioning	The external BT device did NOT pair to the speaker successfully	Pair the external BT device to the speaker
	The external BT device is too far away from the speaker	Place the external BT device closer to the speaker

SPECIFICATIONS

Power source: Built-in DC 3.7V, 1800mAh rechargeable battery
Recharge by DC 5V through Micro USB port

Bluetooth Version: V4.2

Bluetooth working range: up to 32 feet in open area

Audio Output Power: 5 W (RMS)

ACCESSORIES:

- 1 x User Manual
- 1 x USB Charging Cable
- 1 x Aux In Cable

**SPECIFICATIONS AND ACCESSORIES ARE SUBJECT TO CHANGE
WITHOUT NOTICE**

SUPPORT

If you have problems with your device, please consult the instructions detailed in this manual. Please also visit us on the web at www.naxa.com to get the latest news, alers, and documentation for your device. For addition assistance, please contact Naxa Technical Support.

NAXA Technical Support

2320 East 49th St.
Vernon, CA 90058

http://www.naxa.com/naxa_support/