

# Portable Task Lamp and TV with Bluetooth®

NTL-7000



## User's manual

### 1. Precautions

#### 1. Storage

- Do not store this device in the environment with extreme temperature; the appropriate storage temperature is -20~60°C, and the operating temperature is -5~40°C;
- Do not use this device in the bathtub, washbasin, kitchen, washtub and other place with water or moist basements, swimming pools or similar places;
- Keep the device away from humid, dusty and smoky environments.
- Do not drop the device or subject it to strong shocks or impacts.
- Do not leave the device in a car. Avoid using the device in an environment subject to strong vibrations.
- Do not poke or scrape the device with sharp objects.

#### 2. Maintenance

- Please disconnect all cables before cleaning the device;
- Please wipe the dirt on the shell, display and keys with soft a cloth lightly moistened with water.
- Do not wipe the device with polishing cloth, scouring powder, alcohol, benzene and other volatile agents or chemical cleaning agents.

#### Warning:

- To ensure the safety of you and others, do not watch the TV or turn on the TV when you are driving;
- It is very dangerous to watch TV programs or operate the TV when you are driving.

#### Special Note:

LCD screen may have a few bright spots or dark spots, which is a very common phenomenon of active-matrix display technology and does not mean that there are defects or failure. Do not attempt to repair. If a failure occurs, immediately turn off the TV, and notify the company or the dealer. The TV is composed of many precision electronic components; disassembly or modification may damage or destroy the TV.

#### 3. Battery charging mode

- The battery can be charged when the TV is in standby state or power on state;
- If the built-in battery is used, the device will turn off automatically when the battery voltage drops to certain level; please connect to charge with the AC or DC power supply.

①

### 4. Notice for battery charging/discharging

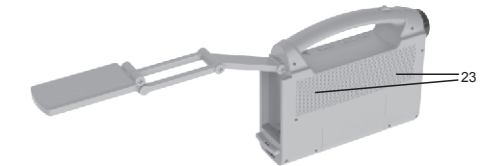
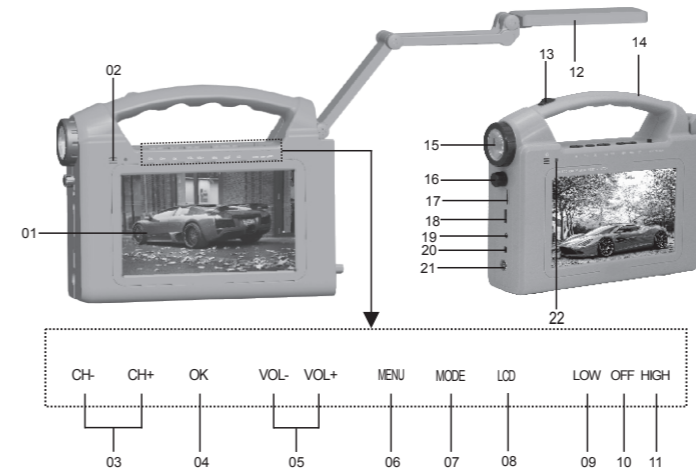
- It is normal that the battery become hot during charging; if, however, the battery temperature exceeds 60°C, immediately disconnect it from the power supply and contact qualified personnel;
- If the ambient temperature is too high during charging, the battery may not charge fully;
- Charging the battery is most efficient when the ambient temperature is 15°C - 25°C.
- To ensure the reliability of the battery, please charge and discharge the battery every three to six months if the device isn't used for long time.

### 2. Packing list

Check whether all parts are included after opening the package.

- |                      |                   |
|----------------------|-------------------|
| 1. AC power adapter  | 3. Remote control |
| 2. Manual            | 4. Antenna        |
| 5. Antenna connector | 6. DC power cable |
| 7. A/V adapter       |                   |

### 3. Appearance



③

### 4. Description of Buttons on Remote Control

- Power:** Press to turn the TV on or off. (The power switch on the main unit [16] must be set to the ON position.)
- ZOOM:** Change the magnification level of the TV.
- FREEZE:** Freeze ON/OFF
- Mute Key:** Press to temporarily disable sound output from the speakers. Press it again to restore the sound.
- Channel Key (Number key (0-9) and --/):** Enter a channel number to tune to a station directly.
- Return Key:** Press this key to return to the last channel you were watching.
- SOURCE:** Press this button to switch between TV/BT/AV/CARD/USB mode.
- INFO:** When you press this key, the system will display messages /information about the current program.
- ▲/▼:** up and down direction key
- ◀/▶:** left and right direction key
- CH+/CH- (Channel keys):** Press CH+ key to tune to a higher channel. Press CH- key to tune to a lower channel.
- VOL+/VOL- (Volume control keys):** Press VOL+ to increase the volume. Press VOL- to decrease the volume.
- ENTER:** confirm button
- MENU:** Menu key. Press to enter the system menu.
- EXIT:** Exit Key. Press to exit a menu.
- AUDIO:** Press to change the audio track (if an alternate track is available).
- CC:** Press to show/hide closed captioning (if CC is available).
- EPG:** Press to display the Electronic Program Guide that is included with ATSC TV broadcasts.

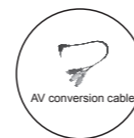
④

- P.MODE:** Picture Mode. Press to change the picture mode preset: Standard, Dynamic, Soft, Personal.
- S.MODE:** Press to change the sound mode presets: Personal, Standard, Music, Movie, Sports.
- CH.LIST:** View the channel list to see the entire program list.
- FAV.LIST:** Favorite list
- SLEEP:** Set a Sleep timer (up to 240 minutes)
- REP:** Repeat (CARD/USB mode only)
- ▶||:** Play/Pause (CARD/USB mode only)
- :** Stop (CARD/USB mode only)
- ◀◀:** Previous track (CARD/USB mode only)
- ▶▶:** Next track (CARD/USB mode only)
- ◀◀:** Fast backward (CARD/USB mode only)
- ▶▶:** Fast forward (CARD/USB mode only)

### 5. Connections

#### A/V Cable Connection

Connect the included A/V adapter cable to the Headphone/AV jack [19]. The adapter allows you to play a device with composite video (yellow) and stereo audio (red, white) on the TV. Set the TV to AV mode after this connection is made.



#### Power Connection

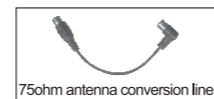
Connect the AC adapter or the DC car cord to the DC Power In [20] port of the TV.

Charging a mobile phone: You can charge your mobile phone or other small electronic device from the USB port [16]. Use the original USB cable provided by your device manufacturer to charge it. Note: To ensure sufficient current to charge your device, do not operate the TV or the light while charging.



#### Antenna

Connect the included antenna to the Antenna In port [21] or use the included antenna adapter to connect any antenna with a coaxial F-type connector.



⑤

### 6. TV Menu Operation

To access the TV menu, press the MENU key. On the menu screen, press CH+ /▲ or CH- /▼ to browse the settings. Press OK to select an item; press VOL+ /▶ or VOL- /◀ to adjust an item; press EXIT to return to the previous screen.

#### 1. Picture: adjust image options.

- There are four options of picture mode, which are Personal, Standard, Dynamic and Soft.
- Contrast adjust the black and white contrast of the image
- Brightness adjust the brightness of the image
- Color adjust the color of the image
- Sharpness adjust the sharpness of the image
- Tint adjust the red and green balance of the image

#### 2. Audio: adjust the sound options.

- There are four options of sound mode, which are Personal, Standard, Movie and Music.

#### 3. Time: Adjust the clock and time options

- Sleep Timer: Set the TV to turn off at the end of the timer.
- Time Zone: Set your area.
- DST: Enable/disable Daylight Savings Time.
- Time Format: Set the clock to display 12 hours or 24 hours.
- Auto Sync: Set the system time automatically from the ATSC broadcast.
- Clock: Adjust the system.

⑥

- TFT LCD screen
- Remote control sensor
- CH-/CH+: Press to tune to the previous/next channel or to browse down/up through on-screen menus
- OK: Confirm button
- VOL-/VOL+: Press to decrease/increase the volume or to browse left/right through on-screen menus
- MENU: Menu button
- MODE: Press to change the active mode (TV, Bluetooth®, A/V, Card, USB)
- LCD: Turn the screen off or on
- LOW: Set the task lamp to low intensity
- OFF: Task lamp off
- HIGH: Set the task lamp to high intensity
- Task lamp
- Flashlight power switch
- Handle
- Flashlight
- Power switch: Turn to switch the system on as well as set the master volume level.
- Memory card slot (microSD)
- USB port
- Headphone jack and A/V port (requires included adapter)
- DC Power In (9V)
- Antenna In port
- Charging indicator: Lights red when the unit is charging; turns off when the unit is fully charged.
- Speakers

### 4. Setup: Adjust the system options.

- Menu Language:** Adjust the language of the on-screen menus.
- Transparent:** Adjust the intensity of the transparency effect applied to the on-screen menus.
- Closed Caption:** Many TV programs contain closed caption information, and the audience can see the caption in words on the screen. Not all the channels at any time have closed caption code information. There are three CC Modes, which are Off (closed caption off), On (closed caption always on when information is available) and CC on Mute (closed caption on when TV is in mute and closed caption off when TV is not in mute). Basic Selection can choose among CC1, CC2, CC3, CC4, Text1, Text2, Text3 and Text4
- Restore Default:** Return all settings to their factory-default options.
- Setup Wizard:** An easy-to-follow guide that will help you set the most important options for your TV.

### 5. Lock: Adjust parental lock controls.

- The default Lock passcode is 0000. Enter the passcode to access the Lock options.
- Change Password:** Change the Lock passcode. If you change the passcode, write it down and save it somewhere safely. The passcode cannot be reset if you forget it.
- System Lock:** Set this to ON to enable the Lock options.
- Input Block:** Disable (or restore) the TV or AV function.
- US:** Block programming based on US TV/movie standards.
- Canada:** Block programming based on Canadian standards.
- Reset RRT:** Reset the rating region table (obtained from the ATSC broadcast signal).
- Unrated:** Block unrated programming.

⑦

## 6. Channel: Adjust TV program options.

**Air/Cable:** Select Air when the TV connected to an antenna to receive over-the-air broadcasts. Select Cable when the TV is connected to a cable box to receive cable programming.

**Auto Scan:** Select to detect available channels and save them to the channel list. Make sure you set the Air/Cable option properly before performing an Auto Scan. Note: performing an auto scan will delete all previously saved channels.

**Favorite:** Create a list of your favorite channels for quick access. Press CH+/▲ or CH-/▼ to select a channel, then press OK to mark it as a favorite. (Press OK again to unmark the channel.) Press MENU when you are done to exit and save the list.

**Show/Hide:** Remove or restore a channel from the Channel List. Hidden channels will not appear when you are browsing TV channels.

Press CH+/▲ or CH-/▼ to select a channel, then press OK to mark it as hidden. (Press OK again to unmark the channel.) Press MENU when you are done to exit and save the list.

**DTV Signal:** Shows the signal strength of the current channel. This item cannot be adjusted.

⑧

### ⚠ Warning

This operation instruction is only intended for reference. No further notice is available to any modification of all information contained therein. Due to continuing improvements, the features and design are subject to change without notice.

### ⚠ Warning

- To prevent injury, this apparatus must be securely attached to the floor/wall in accordance with the installation instructions.
- The mains plug is used as the disconnect device, the disconnect device shall remain readily operable, and it shall be disconnected from the mains completely.
- The plug is used as disconnect device from the mains supply, the plug shall remain readily operable.
- The apparatus should not be exposed to dripping or splashing and that no objects filled with liquids, such as vases, shall be placed on the apparatus.
- No naked flame sources, such as lighted candles, should be placed on the apparatus.
- Batteries (battery pack or batteries installed) shall not be exposed to excessive heat such as sunshine, fire or the like.
- Danger of explosion if battery is incorrectly replaced. Replaced only with the same or equivalent type.

⑫

## 7. Bluetooth® Mode

### Pairing a Device with Bluetooth®

A device must be paired with the TV before using them together for the first time. *Make sure Bluetooth is enabled on your device before attempting to pair it.*

Set the active mode of the TV to Bluetooth: press MODE to access the Mode menu, then select BT.

The TV will automatically search for a paired device. If it finds a paired device, it will connect to it automatically, and you're ready to play music from that device.

If it does not detect a paired device, it will switch to Pairing mode (the TV will announce "The Bluetooth device is ready to pair."). When the TV is in Pairing Mode, it will announce itself to nearby Bluetooth devices and accept pairing requests from them.

1. The TV will announce itself as "NAXA NTL-7000." Use your device to search for nearby Bluetooth devices. (This function is usually in the Bluetooth settings menu; refer to your device's instruction manual to learn more.)
2. Select the TV from the list of found devices. If your device asks for a passcode, use "0000" to complete the pairing process.
3. When the TV is paired and connected to a device, the TV will announce "The Bluetooth device is connected successfully."

If the pairing process fails, turn the TV off, set the TV to Bluetooth mode, and then repeat steps 1-3.

*Note: Make sure that the volume of your device is set to its maximum level; use the speaker to adjust the volume to a comfortable level.*

*The speaker cannot be paired with more than one device at a time.*

⑨

## 8. Troubleshooting Guide

If you are having difficulty with your device, please refer to the guide below which describes common problems. If the guide does not address your concern, please contact Naxa Technical Support.

No image and sound	Ensure that the AC Adapter or DC power cable is connected securely to a power source that matches the rated power type. Ensure that the power switch is set to ON.
No signal	Run the Auto Scan feature to find all TV channels there are available. Ensure that the antenna is securely connected and that the TV is located within receiving distance of a broadcast station.
No sound	Ensure that the volume level is not set to the minimum; that no headphone is connected; that you are viewing a TV channel with a ; strong signal; and that the mute function is not enabled.
Mosaic in the image	Ensure that the antenna is connected securely and that the channel you are trying to view has a strong signal.
Cannot receive signals	TV signal strength is affected by your distance from the TV broadcaster as well as environmental factors (e.g., tall buildings and mountains can interfere with reception.) If you cannot receive a TV signal, you may need to use a powered antenna, a larger antenna, or you may need to move closer to the TV broadcaster.
Image is too dark	Adjust the brightness and contrast levels in the System menu.

⑩

## 9. Specifications

### Input

ATSC frequency: 54MHz~803MHz

NTSC receiving frequency: 55.25MHz~801.25MHz

LCD screen: 7" LCD

Resolution: 800 x 480

LCD screen scale: 16:9

### Multimedia

Support MP3, JPG, MPEG2, MPEG2\_HD, MPEG4, MPEG4\_SD, MPEG4\_HD, H.264, FLV, MVC, DD

### Power Supply:

Power Supply: AC INPUT 100-240V 50/60HZ

DC OUTPUT 9V/2000mA

Built-in battery

Dimensions: 250mmX180mmX60mm

Net Weight: About 820g

Power Consumption: About 15W