

Action Camera

Waterproof · HD 720p



Made in China



2-inch
LCD



120°
Wide Angle
Lens



HD
720p

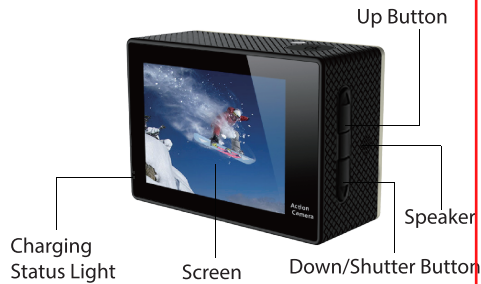
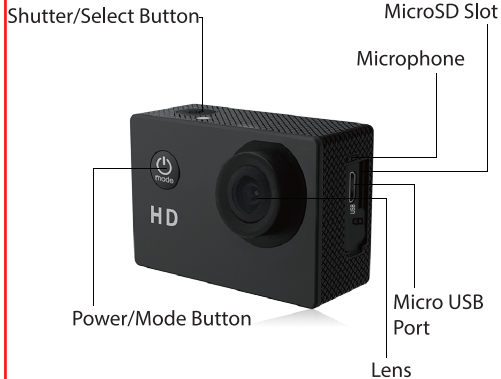


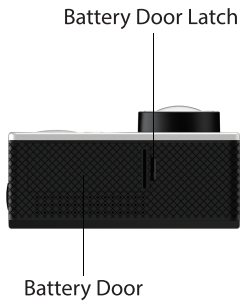
Waterproof
to 30m



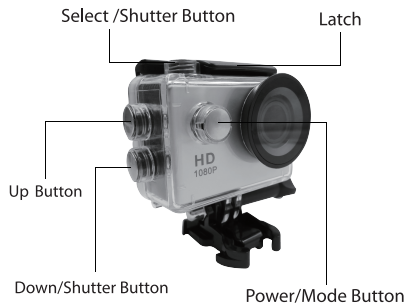
1.5 Hours

THE BASICS





WATERPROOF HOUSING



ACCESSORIES



Waterproof
Housing



Handle Bar/
Pole Mount



Clip 1



Mount 1



Mount 2



Mount 3



Mount 4



Bandages



USB Cable



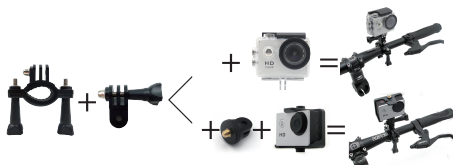
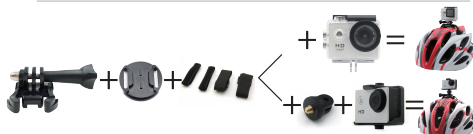
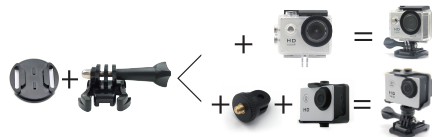
Battery



Manual

MOUNTING YOUR CAMERA

Attach your camera to helmets, gear and equipment.



GETTING STARTED

Hello

Congratulations on your new camera! This user manual will help you learn the basics of capturing life's most incredible moments!

Getting Started

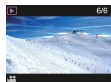
Turn **camera ON** and repeatedly press the **Power/Mode Button** to cycle through camera modes.

RECORD VIDEO



**1080p 15fps/720p 30fps
VGA 30fps**

PLAYBACK



**View your videos and
photos on the screen**

CAPTURE PHOTO



5M/3M/2M/1M

SETTINGS



Video, Photo, and System Settings

Repeatedly press the **Power/Mode Button** to cycle through three settings. Use the **Up** or **Down Button** to cycle through the Settings options and press **Shutter/Select** to select desired option.

VIDEO SETTINGS



1) **Movie Size:** HD 720p 30fps/ 640(640*480) 30fps

MicroSD Card	720p 30fps	480p 30fps
32 GB	320 mins	480 mins
16 GB	160 mins	240 mins
8 GB	80 mins	120 mins

- 2) **Date Stamp:** Off/Date & Time
- 3) **Looping Video:** Off/On
- 4) **Exposure:**
+2.0/+1.7/+1.3/+1.0/+0.7/+0.3/0

PHOTO SETTINGS



- 1) **Resolution:** 5M/3M/2M/1M
- 2) **Single Shot:** Off/On
- 3) **Burst Photo:** Off/On
- 4) **Time Lapse:** Off/2s/10s
- 5) **Continuous Lapse:** Off, 2, 3, 5, 10, 20, 30 or 60 second intervals

SYSTEM SETTINGS



- 1) **Sounds:** On/Off, Start-up 1/2/3/None, Beep On/Off, Volume 0/1/2/3
- 2) **Power Frequency:** 50Hz/60Hz
- 3) **Panel Protect** (Screen Saver): 30Sec/1 min/3 min/5 min
- 4) **Power Save:** Off/1 min/3 min
- 5) **Date & Time:** YYYY/MM/DD, DD/MM/YYYY, MM/DD/YYYY
- 6) **Language:** English/Tranditional Chinese/Italian/Spanish/Portuguese/German/Dutch/France/Czech/Polish/Turkish/Russian/Japanese/Korean/Thai
- 7) **Format:** No/Yes
- 8) **Reset All:** No/Yes
- 9) **Version**

CAPTURING VIDEO + PHOTOS

Press the **Shutter/Select Button** to start/stop recording. Press the **Shutter/Select Button** to take a picture. You can also change **video** and **photo** settings in the Settings menu.

STORAGE/MICROSD CARDS

This camera is compatible with **8GB**, **16GB**, and **32GB** capacity **microSD**, **microSDHC**, and **microSDXC** memory cards. You must use a **microSD** card with a **Class 10** speed rating. We recommend using brand name memory cards for maximum reliability in high-vibration activities.

CHARGING THE BATTERY

If recording is occurring when battery reaches 0%, the camera will save the file and power OFF.

To charge the battery:

1. Connect the camera to a computer or USB power supply.
2. The Charging Status Light remains ON while the battery is charging.
3. The Charging Status Light will turn OFF when the battery is fully charged.

* Charging Time: 4 hours

SUPPORT

Please visit us on the web at www.naxa.com to get up to the minute news, alerts, and documentation for your device. For additional assistance, please contact Naxa Technical Support.

NAXA Technical Support

2320 East 49th St.

Vernon, CA 90058

<http://www.naxa.com/supportcenter/>

FCC NOTICE

Warning: Changes or modifications to this unit not expressly approved by the party responsible for compliance could void the user's authority to operate the equipment.

NOTE: This equipment has been tested and found to comply with the limits for a Class B digital device, pursuant to Part 15 of the FCC Rules. Limits are designed to provide reasonable protection against harmful interference in a residential installation. This equipment generates, uses and can radiate radio frequency energy and, if not installed and used in accordance with the instructions, may cause harmful interference to radio communications.

However, there is no guarantee that interference will not occur in a particular installation. If this equipment does cause harmful interference to radio or television reception, which can be determined by turning the equipment off and on, the user is encouraged to try to correct the interference by one or more of the following measures: encouraged to try to correct the interference by one or more of the following measures:

- Reorient or relocate the receiving antenna.
- Increase the separation between the equipment and receiver.
- Connect the equipment into an outlet on a circuit different from that to which the receiver is connected.
- Consult the dealer or an experienced radio/TV technician for help.